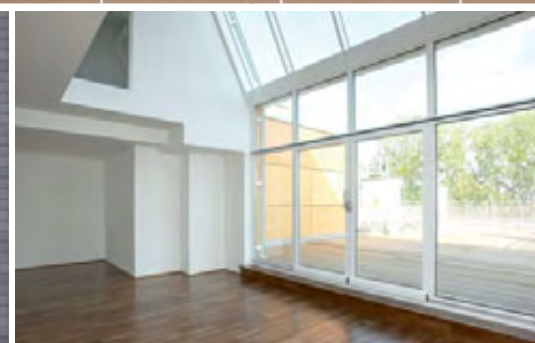


Material moisture measurement



WOOD AND CONSTRUCTION MOISTURE

Protection against moisture is a major problem in buildings. Early detection of building and materials moisture contribute to the sustained protection and preservation of building fabric. Moisture assessment and localisation with suitable instruments is essential for this.

Non-destructive material moisture detection using the capacitive measuring method, ensures measurement results are obtained effortlessly and quickly: without damaging the surface during and especially after the construction phase. Measuring instruments utilising the precision measuring concept are used to determine the moisture in various building materials. This measuring method provides very accurate results.

Powerful technology



Multi-Material Deepscan with % display



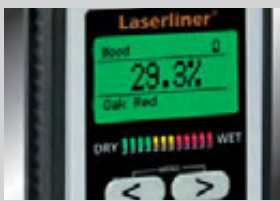
Sturdy rubber casing – Ergonomically formed for secure grip



Two flexible measuring plates on the bottom of the device ensure the material surface is not damaged.



Protective cap with self-test function



12-position wet/dry LED indicator



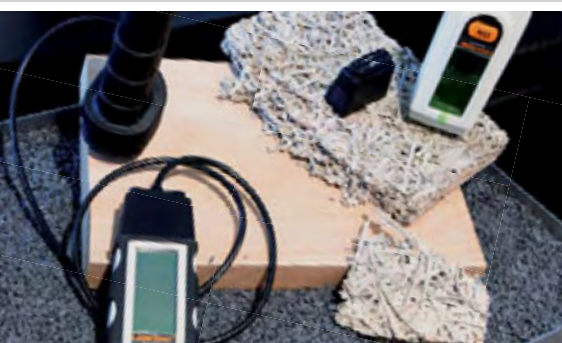
High degree of accuracy thanks to selectable material groups



Intelligent building moisture measurement Without damaging the surface – measures on floor, wall and ceiling



Conversion table with many different types of timber and building materials



Moisture measuring devices

Overview



TYPES OF WOOD:

	WoodTester	DampFinder	DampFinder Plus	DampMaster / DampMaster Plus	MoistureFinder	MoistureMaster
Ash	•	–	•	•	•	•
Alder	•	–	•	•	–	•
Amer. mahogany	–	–	•	•	•	–
Beech	•	•	•	•	•	•
Birch	•	•	•	•	•	•
Cedar	–	–	•	•	•	•
Douglas fir	–	–	•	•	–	–
Ebony	•	–	•	•	–	–
Elm	–	–	•	•	–	•
European larch	–	–	•	•	–	–
Linden	•	–	•	•	•	•
Maple	•	–	•	•	–	•
Pedunculate oak	•	•	•	•	•	•
Redwood	–	–	–	–	–	•
Robinia	–	–	–	–	–	•
Scots pine	–	–	•	•	•	–
Spruce	•	•	•	•	•	•
Teak	–	–	•	•	–	•
White meranti	–	–	–	–	–	•
Willow	•	–	•	•	–	•
Many other types in the conversion table	–	–	–	•	–	•

BUILDING MATERIALS:

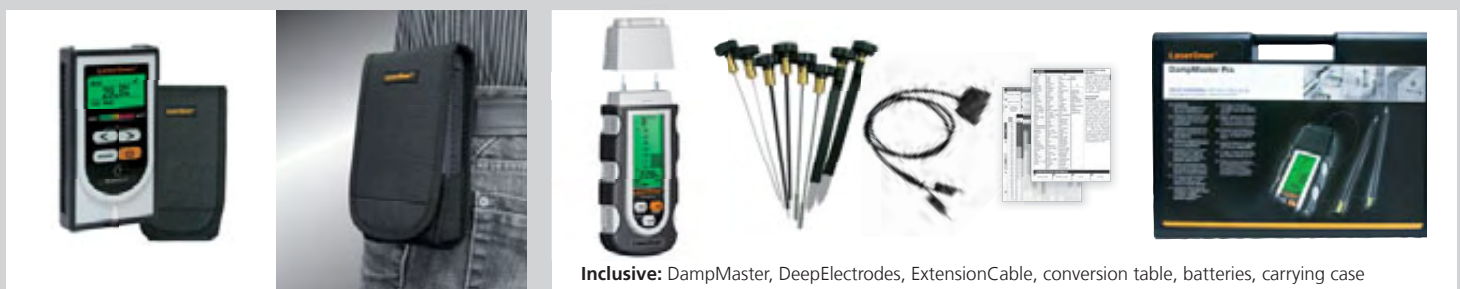
Aerated concrete	–	•	•	•	–	•
Anhydrite screed	–	–	–	•	–	•
Ardurapid cement screed	–	–	–	•	–	–
Cement bonded chipboard	–	–	•	•	–	–
Cement mortar	–	–	•	•	–	–
Cement screed	–	•	•	•	•	•
Cement screed with bitumen additive	–	–	–	•	–	–
Cement screed with plastic additive	–	–	–	•	–	–
Chalky sandstone	–	–	–	–	–	•
Concrete	–	•	•	•	–	•
DIN magnesium oxychloride flooring	–	–	–	•	–	–
Elastizel screed	–	–	–	•	–	–
Expanded polystyrene	–	–	•	•	–	–
Gypsum screed	–	–	–	•	–	–
Plaster	–	•	•	•	•	•
Softboard (wood) with bitumen	–	–	–	•	–	–
Wood cement screed	–	–	–	•	–	–
Wood cement screed	–	–	•	•	–	–
INDEX mode	–	–	–	•	–	•

Material moisture measuring instrument for professional use

Laserliner instruments are available in sturdy carrying bags or hard-shell cases.

SOFT SOFT: softbag
Quick to use and handy on site.

HARD HARD: plastic carry case –
Practical, always ready for use.



Inclusive: DampMaster, DeepElectrodes, ExtensionCable, conversion table, batteries, carrying case

Moisture measuring devices

MoistureFinder

NEW



Professional material moisture measurement – quick and non-destructive

- Non-destructive measurement of material moisture by capacitive measurement. The tested material is not damaged.
- Simple handling: select material type then place the instrument on the material's surface to determine moisture content in %.
- 4 selectable material characteristics: soft woods (e.g. spruce, pine, linden), hard woods (e.g. beech, oak, birch), plaster and screed.
- LED wet/dry indicator provide immediate measurement results for moisture content in the tested material.

Measuring range / Accuracy:

- Cement screed: 0%...4,5% / ± 0,5%
- Gypsum plaster: 0%...9% / ± 0,5%
- Softwood: 0%...52% / ± 2% (6%...30%)
- Hardwood: 0%...32% / ± 2% (6%...30%)

Inclusive: MoistureFinder, battery

ORDER NO.	EAN-CODE	PU
-----------	----------	----

082.032A	4 021563 671120	5
----------	-----------------	---



9V

PT

MoistureMaster

NEW



Professional material moisture measurement – quick and non-destructive

- Non-destructive measurement of material moisture by capacitive measurement. The tested material is not damaged.
- 62 selectable material characteristics: 56 wood and 6 building material types (cement screed, anhydrite screed, gypsum plaster, aerated concrete, concrete, lime malm brick)
- Index mode
- Quick localisation of moisture: comparison measurements can be made in index mode to reveal increasing or decreasing moisture based on a neutral scale.
- LED wet/dry indicator provide immediate measurement results for moisture content in the tested material.
- Menu system with 22 languages
- Illuminated, transparent display

Measuring range / Accuracy:

- Cement screed: 0%...4,5% / ± 0,5%
- Anhydrite screed: 0%...3,1% / ± 0,5%
- Gypsum plaster: 0%...9% / ± 0,5%
- Aerated concrete: 0%...48% / ± 1%
- Concrete: 0%...5% / ± 0,5%
- Lime malm brick: 0%...10% / ± 0,5%
- Wood: 0%...60% / ± 2% (6%...30%)

Inclusive: MoistureMaster, battery, softbag

ORDER NO.	EAN-CODE	PU
-----------	----------	----

082.033A	4 021563 671137	5
----------	-----------------	---



9V

IQ

SOFT

MoistureMaster + CondenseSpot Pro Combi-Set

NEW



Set for early detection and assessment of material moisture and condensation.

- Non-destructive measurement on over 100 different materials
- Determines surface and dew point temperature
- Locating thermal bridges
- Product description same as above and on Page 16

Inclusive: MoistureMaster, CondenseSpot Pro, batteries, carrying case

ORDER NO.	EAN-CODE	PU
-----------	----------	----

082.033-1	4 021563 674275	2
-----------	-----------------	---



9V



9V

IQ

HARD